

Exoplanet Program Analysis Group (ExoPAG)



Ilaria Pascucci (U. Arizona)
Chair, ExoPAG Executive Committee

January 7th, 2024

Exoplanet Exploration
(ExEP)
Program office at JPL



ExoPAG EC

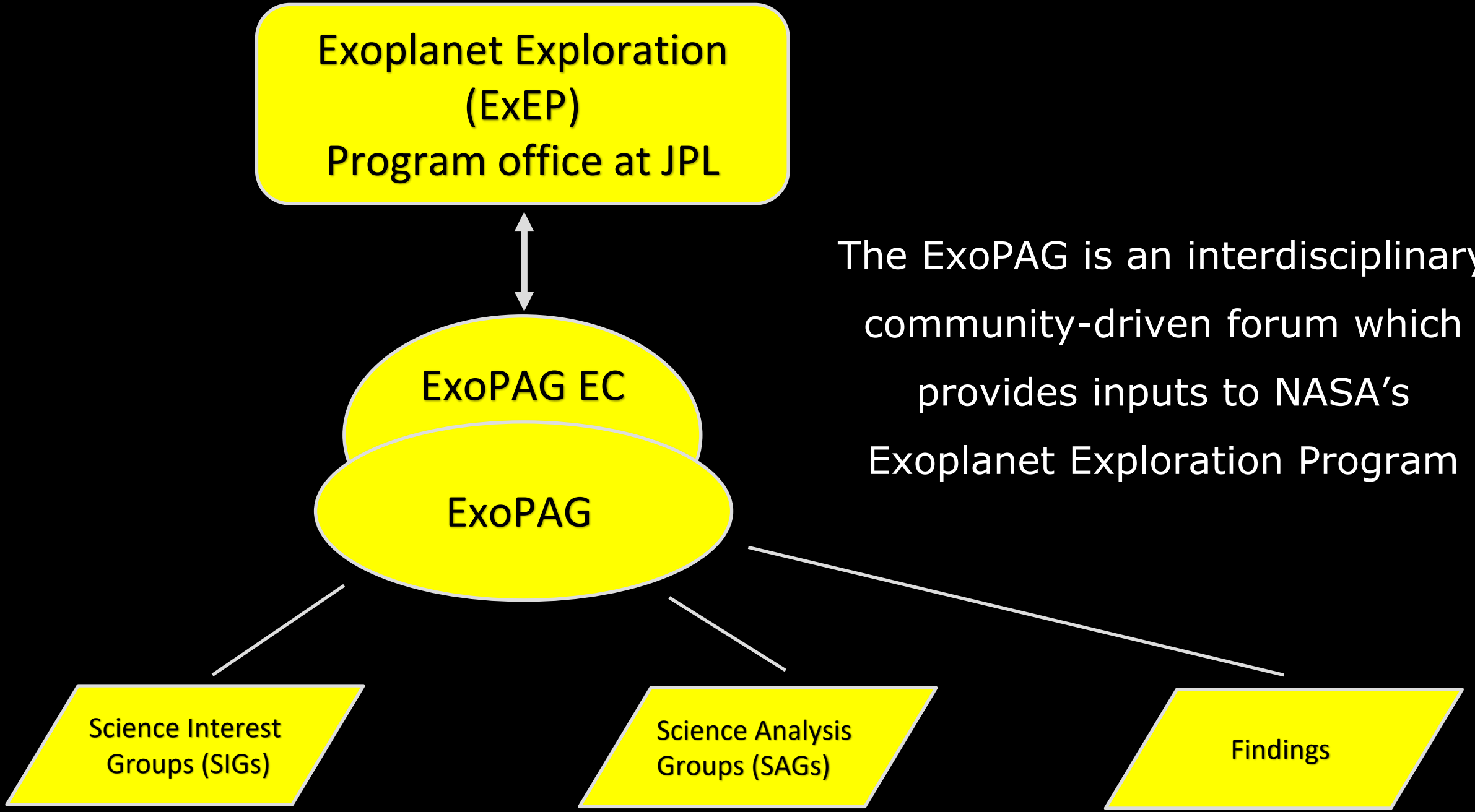
ExoPAG

The ExoPAG is an interdisciplinary
community-driven forum which
provides inputs to NASA's
Exoplanet Exploration Program

Science Interest
Groups (SIGs)

Science Analysis
Groups (SAGs)

Findings



ExoPAG Science Interest Groups

Community-driven groups that focus on discussing specific exoplanet topics or goals
(long-term activities, several years)

□ Ongoing SIGs:

- SIG2 “Exoplanets Demographics” (Chairs: Fernandes & Johnson)
- SIG3 “Exoplanets Solar System Synergies” (Chairs: Meadows & Mandt)

ExoPAG Study Analysis Groups

Community-driven groups that focus on discussing specific exoplanet topics or goals (short-term activities. **Reports completed in 1-2 years and available to the community** via e.g. a PASP paper, ArXiv paper, workshop...)

- ❑ 17 SAGs completed and 2 ongoing:
 - SAG 23: The Impact of Exo-Zodiacal Dust on Exoplanet Direct Imaging Surveys (Debes, Hasegawa, Rebollido)
 - SAG 24: Exploring the Complementary Science Value of Starshade Observations (Seager & Shaklan)

ExoPAG findings

- ❑ Findings are analysis carried out by the community and **forwarded to the Astrophysics Division leadership as input** [they are not recommendations]
- ❑ Ideas for new findings solicited from community (e.g. ExoPAG email and at Business Meetings) and discussed at community forum (e.g. Summer ExoPAG)
- ❑ Findings with community support are reviewed by ExoPAG EC and top 1-3 findings put forward to ExoPAG for a vote (more than 2/3 support needed to “pass”). Ideas not adopted (or selected for vote) can be kept and re-discussed in future
- ❑ Approved findings are listed here:
<https://exoplanets.nasa.gov/exep/exopag/exopagFoundingDocuments/exopag-findings/>

ExoPAG EC Members, Liaisons, and ExEP Support



I. Pascucci



M. Bottom



O. Cohen



K. Colon



I. Crossfield



D. Dragomir



K. Follette



N. Hinkel



S. Johnson



E. May



B. Mennesson



M. Rice



L. Zhao



M. Meyer



H. Jang-Condell



J. Wisniewski



M. Ansdell



R. Eckman



Toka for
G. Fowler



G. Blackwood



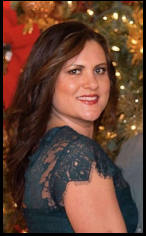
K. Stapelfeldt



E. Mamajek



J. Gregory



J. Blumberg
6

Selected ExoPAG EC activities

- ❑ Organize monthly ExoPAG EC + semi-annual ExoPAG meetings, cross-PAG meetings, **report to the Astrophysics and the Planetary Science Advisory Committees**
- ❑ Review and provide inputs to the Exoplanet Program Science Gap List
- ❑ Contribute to cross-PAG SIGs (Science Interest Group) and SAGs (Science Analysis Group)
- ❑ Contribute to ExoPAG SIGs and SAGs
- ❑ Sponsor the **ExoExplorers** Program which supports the professional development of early career scientists

Ways to stay informed and participate

- ❑ Subscribe to the exopagannounce@jpl.nasa.gov

<https://exoplanets.nasa.gov/exep/exopag/announcementList/>

- ❑ Participate to the semi-annual in-person meetings

- ❑ Propose to start a Science Interest Group (SIG) or a Study Analysis Group (SAG)

- ❑ Propose findings and suggestions

<https://exoplanets.nasa.gov/exep/exopag/exopagFoundingDocuments/exopag-findings/>